



DESERT VALLEY TESTING
 2512 E Magnolia Street
 Phoenix, Arizona 85034
 480-788-6644
 www.desertvalleytesting.com

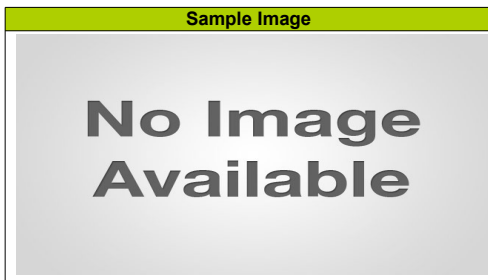
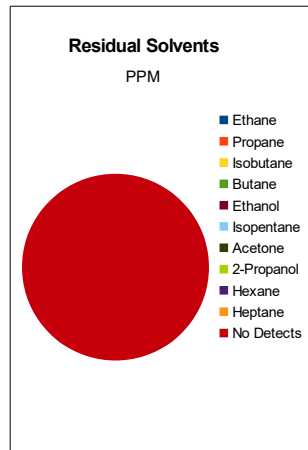
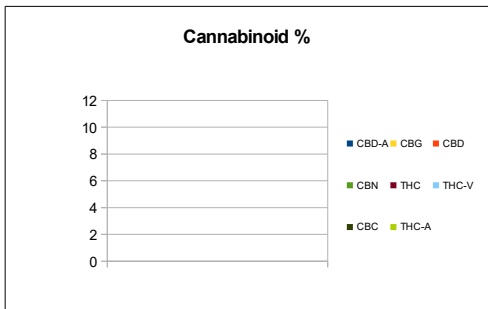
Sample		
Sample Name	TIZSA SWISS terpens	
Laboratory Number	2016010568	
Batch Number	N/A	
Matrix	Tincture/Terpene	
Analyzed Date	12/19/16	
Extraction Date	12/19/16	
Cannabinoid (HPLC)	% Results	mg/g Results
CBD-A	Not Tested	Not Tested
CBG	Not Tested	Not Tested
CBD	Not Tested	Not Tested
THC-V	Not Tested	Not Tested
CBN	Not Tested	Not Tested
THC	Not Tested	Not Tested
CBC	Not Tested	Not Tested
THC-A	Not Tested	Not Tested
Cannabinoids Total	%	mg/g
Max Active THC	Not Tested	Not Tested
Max Active CBD	Not Tested	Not Tested
T. Active Cannabinoids	Not Tested	Not Tested
Total Cannabinoids	Not Tested	Not Tested



RS (GCMS-MS)	Results
Compound	PPM
Ethane	Not Tested
Propane	Not Tested
Isobutane	Not Tested
Butane	Not Tested
Ethanol	Not Tested
Isopentane	Not Tested
Acetone	Not Tested
2-Propanol	Not Tested
Hexane	Not Tested
Heptane	Not Tested

Terpene (GC-MS)	% Results
Cannabinoid	%
Alpha-Pinene	6.84%
Camphene	0.11%
(-)-beta-Pinene	2.26%
beta-Myrcene	7.19%
delta-3-Carene	0.23%
d-Limonene	1.13%
alpha-Terpinene	0.08%
P-Cymene	0.16%
Eucalyptol (1,8-Cineole)	0.52%
Ocimene	2.28%
gamma-Terpinene	0.05%
Terpinolene	1.63%
Linalool	0.09%
(-)-Isopulegol	0.02%
Geraniol	0.01%
beta-Caryophyllene	7.78%
alpha-Humulene	3.21%
Nerolidol	0.16%
(-)-Guaiaol	0.07%
(-)-alpha-Bisabolol	0.18%
(-)-Caryophyllene Oxide	5.70%
Sabinene	0.00%
alpha-Phelladrene	0.06%
Fenchol	0.02%
Camphor	0.00%
Isoboreol	0.00%
Menthol	0.00%
Borneol	0.01%
Terpineol	0.04%
(+)-Pulegone	0.00%
Geranyl Acetate	0.00%
Valencene	0.15%

Ratios
N/A :1 CBD to THC
N/A :1 THC to CBD



g/medible	N/A
mg THC/medible	N/A
mg CBD/medible	N/A
(mg) total cannabinoids/medible	N/A

Micro Results:	NA
Aerobic Bacteria Count:	NON DETECT

Metals	Results
Compound	PPM
Mercury	0.038
Lead	< 0.30
Arsenic	< 0.05
Cadmium	< 0.02
Pesticides	Results
Compound	PPM
Quinoxifen	< 2.0
Myclobutanil	< 2.0
Azoxystrobin	< 1.0
Daminozide	< 1.0
Paclbutrazol	< 2.0
B-cyfluthrin	< 4.0

Percent Moisture
Not Tested

Chemist: JW
 Report Expires: 01/19/17

